



AUGUST 2001

1307.1

ECONOMIC INDICATORS

NEW SOUTH WALES

EMBARGO: 11:30AM (CANBERRA TIME) WED 15 AUG 2001

C O N T E N T S

	<i>Page</i>
Notes	2
NSW overview.	3
Main features	4
List of tables and graphs	5
Population	6
Labour	7
Production	10
Building	11
Retail trade	12
New motor vehicle registrations	13
Tourism	14
Consumer and producer price indexes.	15
Finance	16
State Government finance	17
Investment.	18
International trade.	19

- For further information about these and related statistics, contact Jill Tomlinson on Sydney 02 9268 4123, or the National Information and Referral Service on 1300 135 070.

NOTES

FORTHCOMING ISSUES

ISSUE

ISSUE DATE

September 2001	17 September 2001
October 2001	15 October 2001
November 2001	15 November 2001
December 2001	17 December 2001
January 2002	15 January 2002

DATA NOTES

ABS statistical series are being impacted to varying degrees as a result of The New Tax System (TNTS), introduced in Australia from 1 July 2000. TNTS included the removal of Wholesale Sales Tax and the introduction of a Goods and Services Tax (GST), and as a result, a wide range of ABS data series will reflect significant immediate and subsequent impacts. For further information see *Australian Economic Indicators, July 2000* (Cat. no. 1350.0).

GENERAL

This publication provides information on a wide range of economic indicators which are the latest available at the time of publication. In a number of cases, figures appearing in this summary are preliminary and are subject to revision in subsequent issues.

SEASONAL ADJUSTMENT AND TREND ESTIMATION

Seasonal adjustment is a means of removing the estimated effects of normal seasonal variation from a series so that the effects of other variations on that series can be more clearly recognised. This means that movements of seasonally adjusted estimates may not be reliable indicators of trend behaviour. Smoothing seasonally adjusted series produces a measure of the underlying trend by reducing the impact of the irregular component of the series. For an explanation of seasonal adjustment derivation, refer to the publication *Seasonally Adjusted Indicators* (Cat. no. 1308.0).

SYMBOLS AND OTHER USAGES

FOB	free on board
kWh	kilowatt hour
n.a.	not available
n.p.	not available for publication but included in totals where applicable
n.y.a	not yet available
r	figure or series revised since previous issue
. .	not applicable
—	nil or rounded to zero
—	break in continuity of series (where a line is drawn across a column between two consecutive figures)

Gregory W. Bray
Regional Director
New South Wales

NSW OVERVIEW

EMPLOYMENT	Employment in NSW in June 2001 was a seasonally adjusted figure of 3,060,400 people. National employment in June 2001 was 9,148,500.
UNEMPLOYMENT	Unemployment in NSW was a seasonally adjusted figure of 200,600 in June 2001. The unemployment rate in NSW was 6.2% while the national unemployment rate was 6.9%.
INDUSTRIAL DISPUTES	In NSW in April 2001 there were 17,000 working days lost due to industrial disputes, an increase of 109.9% on the working days lost in March 2001. Nationally, there were 29,100 working days lost due to industrial disputes in April 2001.
JOB VACANCIES	In NSW there were 28,400 job vacancies in May 2001, a decrease of 32.0% from May 2000. Nationally there were 83,400 job vacancies.
BUILDING APPROVALS	The seasonally adjusted number of new dwelling units approved for NSW in May 2001 was 3,057 dwelling units. This was an increase of 13.5% from April 2001 but a decrease of 22.7% from May 2000. Nationally, there were 11,734 new dwelling units approved.
RETAIL	In seasonally adjusted terms, total retail sales for NSW in May 2001 were \$4,607.7 million. Nationally, total retail sales were \$13,326.3 million.
NEW MOTOR VEHICLE REGISTRATIONS	In June 2001, there were 19,447 new motor vehicle registrations for NSW (seasonally adjusted). Nationally, there were 58,954 new motor vehicle registrations.
FINANCE	The seasonally adjusted value of housing finance commitments for owner occupation in NSW in May 2001 was \$3,147 million, an increase of 31.0% on May 2000.
NSW GOVERNMENT FINANCE	The General Government operating surplus for NSW for the 11 months ended 31 May 2001 was \$2,278 million. The General Government Budget Surplus (GFS Net Lending result) for the 11 months ended 31 May 2001 was \$881 million.
IMPORTS AND EXPORTS	In May 2001 there were \$4,223 million of imports into NSW and \$1,980 million of exports from NSW. Nationally, there were \$10,001 million of imports and \$9,950 million of exports.

MAIN FEATURES

FINANCE

The seasonally adjusted estimate for the value of housing finance in NSW was \$3,147 million in May 2001, an increase of 31.0% from the corresponding period of the previous year. Nationally, the seasonally adjusted value of lending commitments for housing finance was \$7,454 million which was an increase of 26.7% from May 2000.

In original terms, total commitments in NSW in May 2001 increased 26.9% from April 2001 and also increased 28.7% from May 2000. There were increases over the month for commitments for the construction of dwellings which rose 36.7% to \$246 million, the purchase of newly erected dwellings which rose by 32.7% to \$134 million, the purchase of established dwellings which rose by 23.3% to \$2,405 million and the refinancing of existing dwellings which rose by 34.8% to \$782 million. Over the period from May 2000, lending commitments for the purchase of newly erected dwellings rose by 42.6%, the purchase of established dwellings rose by 26% and the refinancing of existing dwellings rose by 49.2%.

There were similar increases, in original terms, for the national figures for May 2001. Lending commitments for the construction of dwellings rose by 41.3% to \$900 million from April 2001. Over the same period, lending commitments for the purchase of newly erected buildings rose by 27.7% to \$300 million, the purchase of established dwellings rose by 24.4% to \$5,373 million and the refinancing of existing dwellings rose by 30.6% to \$1,745 million.

IMPORTS AND EXPORTS

In May 2001, the customs value of imports into NSW was \$4,223 million and the value of exports (FOB) from NSW was \$1,980 million. In terms of annual movements, exports from NSW increased 11.8% from May 2000 while imports decreased 7.8%. At the national level, imports were \$10,001 million in May 2001 while exports were \$9,950 million, an increase of 14.4% from May 2000.

Commodities exported from NSW in May 2001 included Meat and meat preparations (\$137 million), Cereals and cereal preparations (\$151 million), Wool and other animal hair (\$81 million), Coal, coke and briquettes (\$350 million), Iron and steel (\$12 million), Aluminium (\$136 million) and Office machines and automatic data processing machines (\$33 million). Cereal and cereal preparations increased by 20.7% from April 2001 while Coal, coke and briquettes decreased by 13.4% and Iron and steel decreased by 14.4% from the previous month. Annual movements included a decrease of 88.7% for Iron and steel and increases of 46.9% for Meat and meat preparations and 28.3% for Cereals and cereal preparations from May 2000.

Nationally, there was a 30.2% increase in Cereal and cereal preparations from April 2001 to May 2001 with a 33.4% increase from May 2000. Other annual changes included a decrease of 57.6% for Iron and steel and increases for Coal, coke and briquettes (40.8%), Meat and meat preparations (22.2%) and Wool and other animal hair (15.0%).

LIST OF TABLES AND GRAPHS

page

POPULATION	1	Estimated resident population, NSW	6
LABOUR	2	Labour data, latest time period, NSW and Australia	7
	3	Labour data, time series, NSW	7
	4	Labour force status of the civilian population, NSW	8
	5	Graph: Unemployment rates, NSW and Australia	9
PRODUCTION	6	Coal and electricity production, latest time period, NSW and Australia	10
	7	Coal and electricity production, time series, NSW	10
BUILDING	8	Building approvals, latest time period, NSW and Australia	11
	9	Building approvals, time series, NSW	11
RETAIL TRADE	10	Turnover of retail establishments, latest time period, NSW and Australia	12
	11	Turnover of retail establishments, seasonally adjusted, time series, NSW	12
NEW MOTOR VEHICLE REGISTRATIONS	12	New motor vehicle registrations, latest time period, NSW and Australia	13
	13	New motor vehicle registrations, seasonally adjusted, time series, NSW	13
TOURISM	14	Accommodation establishments, latest time period, NSW and Australia	14
	15	Accommodation establishments, time series, Sydney and NSW	14
	16	Graph: Hotels, motels etc., monthly room occupancy rates, Sydney Tourism Region and NSW	14
CONSUMER AND PRODUCER PRICE INDEXES	17	Consumer and producer price indexes, latest time period, NSW and Australia	15
	18	Consumer and producer price indexes, time series, NSW	15
	19	Graph: Consumer Price Index, Sydney and average of eight capital cities	15
FINANCE	20	Finance commitments, latest time period, NSW and Australia	16
	21	Finance commitments, time series, NSW	16
STATE GOVERNMENT FINANCE	22	Government finance, general government sector, monthly operating statement, NSW	17
INVESTMENT	23	Actual private new fixed capital expenditure, latest time period, NSW and Australia	18
	24	Actual private new fixed capital expenditure, time series, NSW	18
	25	Graph: Actual private new fixed capital expenditure by type of asset, trend estimate, NSW	18
INTERNATIONAL TRADE	26	Imports and exports, latest time period, NSW and Australia	19
	27	Imports and exports, time series, NSW	19

1 ESTIMATED RESIDENT POPULATION — NSW

	Estimated resident population at end of period			Increase during period			Mean estimated resident population for year ended	
	Males	Females	Persons	Natural increase(a)	Net estimated migration(b)	Total increase	30 June	31 December
	'000	'000	'000	'000	'000	'000	'000	'000
1998	3 164.5	3 204.0	6 368.5	39.9	28.1	68.1	6 303.5	6 335.7
1999	3 198.5	3 235.1	6 433.6	42.3	22.7	65.0	6 367.3	6 397.6
2000	3 235.3	3 267.3	6 502.6	41.0	28.1	69.0	6 433.3	6 468.3
1999								
March qtr	3 171.0	3 210.5	6 381.5	10.7	2.3	13.0
June qtr	3 179.2	3 217.5	6 396.7	10.1	5.1	15.2
September qtr	3 187.8	3 224.7	6 412.5	8.1	7.7	15.8
December qtr	3 198.5	3 235.1	6 433.6	13.4	7.7	21.1
2000								
March qtr	3 205.0	3 240.6	6 445.7	7.6	4.5	12.1
June qtr	3 214.6	3 248.9	6 463.5	12.5	5.2	17.8
September qtr	3 225.5	3 258.0	6 483.5	9.2	10.8	20.0
December qtr	3 235.3	3 267.3	6 502.6	11.6	7.6	19.2

(a) Excess of live births over deaths.

(b) Special arrangements were put in place to estimate net overseas migration data for September and December quarters 2000 and thereby enable production of State and Territory population estimates. These estimates were based on a sample of passenger cards completed by persons arriving in or departing from Australia in the period August through to December 2000 together with other information available to the Department of Immigration and Multicultural Affairs (DIMA). Further information is available in *Demography Working paper 2001/1 — Estimating July to December 2000 Net Overseas Migration*, available on the ABS website.

Source: Australian Demographic Statistics (Cat. no. 3101.0).

2 LABOUR — NSW AND AUSTRALIA

			New South Wales			Australia		
				Change from prior period	Change from same period prior year	Latest figure	Change from prior period	Change from same period prior year
	Unit	Latest period	Latest figure	%	%	no.	%	%
Employed persons (seasonally adjusted)	'000	June 2001	3 060.4	-0.1	0.6	9 148.5	—	1.2
Unemployed persons (seasonally adjusted)	'000	June 2001	200.6	5.9	10.4	680.5	0.7	5.8
Labour force (seasonally adjusted)	'000	June 2001	3 261.0	0.2	1.1	9 829.0	—	-1.6
Participation rate (seasonally adjusted)	%	June 2001	62.7	0.2	0.2	63.8	-0.2	0.2
Unemployment rate (seasonally adjusted)	%	June 2001	6.2	6.9	10.7	6.9	—	4.5
Industrial disputes — working days lost	'000	April 2001	17.0	109.9	-15.0	29.1	-17.8	-31.0
Job vacancies	'000	May 2001	28.4	-11.0	-32.0	83.4	-12.7	-18.3
Average weekly employee earnings — full-time adult ordinary time earnings (seasonally adjusted)	\$	February 2001	840.9	-0.4	3.6	808.7	0.8	4.6

Source: *Average Weekly Earnings, States and Australia* (Cat. no. 6302.0); *Industrial Disputes, Australia* (Cat. no. 6321.0); *Job Vacancies, Australia* (Cat. no. 6354.0); *Labour Force, Australia, Preliminary* (Cat. no. 6202.0).

3 LABOUR — NSW

	Seasonally adjusted(a)						Industrial disputes (working days lost)	Job vacancies
	Employed persons	Unemployed persons	Labour force	Participation rate	Unemployment rate			
	'000	'000	'000	%	%		'000	'000
2000								
April	3 040.1	177.4	3 217.6	62.6	5.5	20.0	..	
May	3 054.6	180.3	3 234.9	62.9	5.6	47.1	41.8	
June	3 043.0	181.7	3 224.7	62.6	5.6	16.5	..	
July	3 059.8	167.1	3 226.9	62.6	5.2	7.5	..	
August	3 082.1	168.4	3 250.5	63.0	5.2	8.8	43.9	
September	3 060.6	169.6	3 230.3	62.5	5.3	8.3	..	
October	3 046.2	168.8	3 215.0	62.2	5.3	5.3	..	
November	3 028.3	176.5	3 204.8	62.0	5.5	9.2	40.4	
December	3 033.4	184.2	3 217.6	62.2	5.7	4.4	..	
2001								
January	3 035.3	179.5	3 214.9	62.1	5.6	5.8	..	
February	3 032.1	190.8	3 222.9	62.2	5.9	8.6	32.0	
March	3 035.7	174.9	3 210.6	61.9	5.4	8.1	..	
April	3 070.1	187.3	3 257.4	62.8	5.7	17.0	..	
May	3 064.7	189.4	3 254.1	62.6	5.8	n.y.a.	28.4	
June	3 060.4	200.6	3 261.0	62.7	6.2	n.y.a.	..	

(a) Seasonally adjusted estimates have been revised from February 1978 to reflect the annual reanalysis of seasonal factors which occurs in February each year. For further information please see the feature article in the February 2001 edition of *Labour Force, Australia* (Cat. no. 6203.0).

Source: *Industrial Disputes, Australia* (Cat. no. 6321.0); *Job Vacancies, Australia* (Cat. no. 6354.0); *Labour Force, Australia, Preliminary* (Cat. no. 6202.0).

4 LABOUR FORCE STATUS, NSW — ORIGINAL

	<i>Employed</i>		<i>Unemployed</i>		<i>Labour force</i>	<i>Not in labour force</i>	<i>Civilian population aged 15 years and over</i>	<i>Unemployment rate(a)</i>	<i>Participation rate(b)</i>
	<i>Full-time workers</i>	<i>Total</i>	<i>Looking for full-time work</i>	<i>Total</i>					
	'000	'000	'000	'000	'000	'000	'000	%	%
MALES									
June									
1997	1 417.4	1 602.0	113.9	124.1	1 726.1	697.3	2 423.4	7.2	71.2
1998	1 444.7	1 628.6	116.7	131.4	1 760.0	697.0	2 457.0	7.5	71.6
1999	1 461.0	1 673.6	88.9	101.4	1 774.9	718.5	2 493.4	5.7	71.2
2000									
April	1 506.1	1 719.0	80.4	98.0	1 817.1	710.5	2 527.6	5.4	71.9
May	1 504.9	1 720.8	79.0	96.8	1 817.7	713.5	2 531.1	5.3	71.8
June	1 518.4	1 720.1	84.6	98.4	1 818.5	716.2	2 534.7	5.4	71.7
July	1 529.6	1 736.5	78.9	94.2	1 830.7	706.9	2 537.6	5.1	72.1
August	1 492.9	1 704.6	86.1	97.5	1 802.2	738.4	2 540.5	5.4	70.9
September	1 519.5	1 742.4	85.2	101.2	1 843.6	699.9	2 543.5	5.5	72.5
October	1 507.8	1 724.6	82.9	95.9	1 820.5	725.0	2 545.5	5.3	71.5
November	1 489.4	1 701.9	87.6	102.4	1 804.3	743.2	2 547.4	5.7	70.8
December	1 513.6	1 729.5	93.4	110.4	1 839.9	709.5	2 549.4	6.0	72.2
2001									
January	1 475.8	1 685.8	104.5	120.3	1 806.1	745.2	2 551.3	6.7	70.8
February	1 479.1	1 684.9	103.8	124.4	1 809.2	743.9	2 553.2	6.9	70.9
March	1 484.0	1 700.1	90.8	108.5	1 808.5	746.5	2 555.1	6.0	70.8
April	1 480.8	1 714.1	89.1	105.1	1 819.1	738.5	2 557.6	5.8	71.1
May	1 478.0	1 713.1	89.0	107.8	1 820.9	739.3	2 560.1	5.9	71.1
June	1 479.3	1 713.0	91.6	110.0	1 823.1	739.6	2 562.7	6.0	71.1
FEMALES									
June									
1997	706.9	1 198.8	62.1	85.9	1 284.7	1 229.9	2 514.6	6.7	51.1
1998	730.2	1 250.6	56.8	82.8	1 333.4	1 212.5	2 545.9	6.2	52.4
1999	747.2	1 270.3	51.0	74.8	1 345.2	1 233.9	2 579.1	5.6	52.2
2000									
April	791.3	1 322.0	52.1	78.8	1 400.8	1 207.6	2 608.4	5.6	53.7
May	785.6	1 327.3	52.5	81.4	1 408.7	1 202.5	2 611.2	5.8	53.9
June	783.4	1 329.0	39.4	72.4	1 401.4	1 212.6	2 614.0	5.2	53.6
July	812.3	1 346.6	36.0	57.8	1 404.4	1 212.2	2 616.7	4.1	53.7
August	787.5	1 334.4	39.7	67.3	1 401.7	1 217.6	2 619.3	4.8	53.5
September	805.6	1 359.4	42.6	70.6	1 429.9	1 192.1	2 622.0	4.9	54.5
October	785.4	1 336.8	39.4	63.4	1 400.2	1 223.3	2 623.5	4.5	53.4
November	787.6	1 320.8	43.0	67.2	1 388.0	1 236.9	2 624.9	4.8	52.9
December	799.2	1 345.9	53.4	74.3	1 420.2	1 206.2	2 626.4	5.2	54.1
2001									
January	787.5	1 305.9	46.2	69.2	1 375.1	1 252.6	2 627.7	5.0	52.3
February	790.6	1 321.2	59.6	91.0	1 412.1	1 216.9	2 629.0	6.4	53.7
March	800.3	1 331.2	45.7	81.0	1 412.2	1 218.1	2 630.3	5.7	53.7
April	785.7	1 357.1	48.2	81.4	1 438.5	1 193.7	2 632.3	5.7	54.7
May	781.5	1 344.7	50.2	79.1	1 423.8	1 210.4	2 634.2	5.6	54.1
June	792.0	1 353.6	50.3	78.7	1 432.4	1 203.8	2 636.2	5.5	54.3

(a) For footnotes see end of table.

4 LABOUR FORCE STATUS, NSW — ORIGINAL(a) — continued

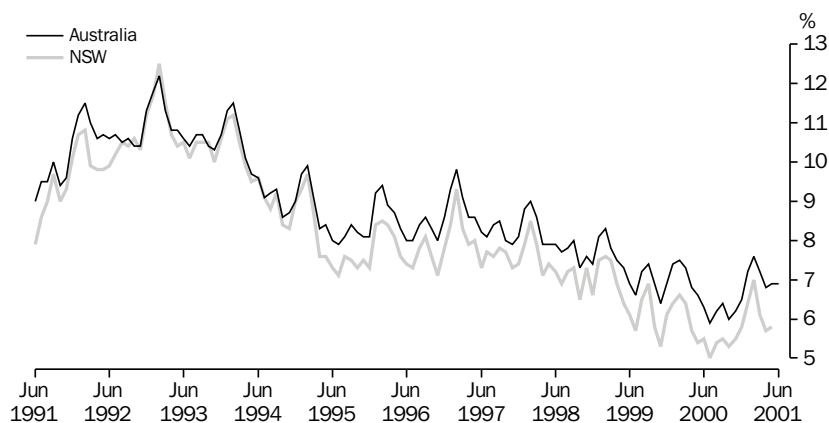
	Employed		Unemployed		Labour force	Not in labour force	Civilian population aged 15 years and over	Unemployment rate(a)	Participation rate(b)
	Full-time workers	Total	Looking for full-time work	Total					
	'000	'000	'000	'000	'000	'000	'000	%	%
PERSONS									
June									
1997	2 124.4	2 800.8	176.0	210.0	3 010.8	1 927.2	4 937.9	7.0	61.0
1998	2 174.8	2 879.2	173.5	214.2	3 093.4	1 909.4	5 002.9	6.9	61.8
1999	2 208.2	2 943.9	139.8	176.2	3 120.1	1 952.4	5 072.5	5.6	61.5
2000									
April	2 297.4	3 041.0	132.5	176.9	3 217.9	1 918.1	5 136.0	5.5	62.7
May	2 290.5	3 048.1	131.4	178.2	3 226.3	1 916.0	5 142.3	5.5	62.7
June	2 301.7	3 049.1	124.0	170.8	3 219.9	1 928.7	5 148.6	5.3	62.5
July	2 341.9	3 083.1	114.9	152.0	3 235.1	1 919.1	5 154.3	4.7	62.8
August	2 280.4	3 039.0	125.8	164.9	3 203.9	1 956.0	5 159.9	5.1	62.1
September	2 325.2	3 101.7	127.8	171.8	3 273.5	1 892.0	5 165.5	5.2	63.4
October	2 293.3	3 061.4	122.3	159.3	3 220.7	1 948.3	5 169.0	4.9	62.3
November	2 277.0	3 022.7	130.5	169.6	3 192.3	1 980.1	5 172.4	5.3	61.7
December	2 312.8	3 075.4	146.8	184.7	3 260.1	1 915.7	5 175.8	5.7	63.0
2001									
January	2 263.4	2 991.7	150.8	189.4	3 181.2	1 997.8	5 179.0	6.0	61.4
February	2 269.7	3 006.0	163.4	215.3	3 221.4	1 960.8	5 182.2	6.7	62.2
March	2 284.3	3 031.3	136.5	189.5	3 220.8	1 964.6	5 185.4	5.9	62.1
April	2 266.5	3 071.2	137.2	186.5	3 257.7	1 932.2	5 189.9	5.7	62.8
May	2 259.4	3 057.7	139.2	186.9	3 244.7	1 949.7	5 194.4	5.8	62.5
June	2 271.3	3 066.7	142.0	188.8	3 255.4	1 943.4	5 198.9	5.8	62.6

(a) The number of unemployed in each group expressed as a percentage of the labour force in the same group.

(b) The labour force in each group expressed as a percentage of the civilian population aged 15 years and over in the same group.

Source: Labour Force, Australia, Preliminary (Cat. no. 6202.0).

5 UNEMPLOYMENT RATE — ORIGINAL



Source: Labour Force, Australia, Preliminary (Cat. no. 6202.0).

6 COAL AND ELECTRICITY PRODUCTION, NSW AND AUSTRALIA — ORIGINAL

			New South Wales				Australia	
			Latest figure	Change from prior period	Change from same period prior year	Latest figure	Change from prior period	Change from same period prior year
	Unit	Latest period		%	%		%	%
Raw coal won								
Underground	'000 tonnes	May 2001	5 577	61.8	−0.2	9 364	44.0	2.2
Open cut	'000 tonnes	May 2001	8 622	20.8	−0.5	22 152	16.4	17.9
Total	'000 tonnes	May 2001	14 199	34.1	−0.4	31 516	23.4	12.7
Electricity	mill. kWh	Mar qtr 2001	16 644	−0.6	1.9	46 865	1.9	1.8

Source: Joint Coal Board for NSW and Australia from ABS data on request; Manufacturing Production, Australia (Cat. no. 8301.0).

7 COAL AND ELECTRICITY PRODUCTION, NSW — ORIGINAL

	Raw coal won			Electricity mill. kWh
	Underground	Open cut	Total	
	'000 tonnes	'000 tonnes	'000 tonnes	
1997–1998	58 299	75 710	134 009	61 804
1998–1999	51 158	80 209	131 367	63 743
1999–2000	52 785	79 768	132 553	65 934
1999				
December	4 662	7 066	11 728	—
2000				
February	3 834	6 394	10 228	16 339
March	4 799	6 549	11 348	—
April	3 855	5 084	8 939	—
May	5 601	8 611	14 212	17 334
June	3 793	6 443	10 237	—
July	3 958	6 161	10 119	—
August	5 609	8 310	13 919	19 289
September	3 838	7 198	11 036	—
October	4 523	6 976	11 499	—
November	5 679	7 830	13 509	16 749
December	3 166	6 253	9 419	—
2001				
January	3 216	6 343	9 559	—
February	4 209	5 934	10 143	16 644
March	5 475	7 842	13 317	—
April	3 446	7 140	10 586	—
May	5 577	8 622	14 199	n.y.a.

Source: Joint Coal Board; Manufacturing Production, Australia (Cat. no. 8301.0).

8 BUILDING APPROVALS — NSW AND AUSTRALIA

	Unit	Latest period	Latest figure	New South Wales		Australia		
				Change from prior period	Change from same period prior year	Change from prior period	Change from same period prior year	
				%	%	%	%	%
Number of dwelling units(a) (seasonally adjusted(b))								
New houses	no.	May 2001	1 752	13.1	-15.3	7 978	24.5	-5.9
Total	no.	May 2001	3 057	13.5	-22.7	11 734	25.9	-11.7
Value of new residential building (seasonally adjusted)	\$m	May 2001	442.4	17.6	-18.3	1 480.6	12.9	-8.5
Value of alterations and additions to residential building(c) (seasonally adjusted)	\$m	May 2001	92.9	4.5	-23.2	299.1	11.2	-5.2
Value of non-residential building(d) (original)	\$m	May 2001	266.1	22.7	-14.7	1 387.1	28.9	27.7
Value of all building (original)	\$m	May 2001	880.1	33.1	-20.1	3 429.8	33.6	2.5

(a) Includes dwelling units approved as part of the construction of non-residential building and alterations and additions to existing buildings (including conversions to dwelling units).

(b) Seasonally adjusted and trend estimates to November 2000 have been revised. See *Building Approvals, Australia* (Cat. no. 8731.0).

(c) Valued at \$10,000 or more. Includes conversions of existing buildings into residential buildings.

(d) Valued at \$50,000 or more.

Source: *Building Approvals, Australia* (Cat. no. 8731.0).

9 BUILDING APPROVALS — NSW

	Number of dwelling units(a), seasonally adjusted				Value of building approvals(b)			
	New houses		Total		Seasonally adjusted		Original	
	Private sector	Total	Private sector	Total	Alterations and additions to residential building(c)	Non-residential building(d)	All building	
	no.	no.	no.	no.	\$m	\$m	\$m	\$m
1997-1998	5 910.9	13 348.6
1998-1999	4 555.3	12 026.7
1999-2000	4 477.3	12 560.8
2000								
March r	2 686	2 696	4 202	4 231	537.6	116.8	455.4	1 135.4
April r	2 220	2 241	3 586	3 727	483.5	109.8	534.7	1 066.0
May r	2 052	2 068	3 873	3 956	541.2	121.0	312.0	1 101.7
June r	1 891	1 899	3 202	3 326	452.6	87.0	350.5	865.3
July r	1 363	1 371	1 904	1 992	285.3	75.2	287.4	668.8
August r	1 543	1 553	2 459	2 529	383.4	83.7	280.4	770.5
September r	1 492	1 500	2 805	2 892	409.2	84.6	309.8	765.9
October r	1 753	1 762	3 563	3 606	473.6	120.4	381.2	942.6
November r	1 530	1 540	2 913	2 994	409.2	87.1	270.1	858.3
December r	1 466	1 477	2 819	2 918	384.4	140.2	208.9	693.6
2001								
January r	1 548	1 556	2 856	2 902	412.9	84.3	553.1	1 007.1
February r	1 573	1 579	2 448	2 614	348.0	86.4	388.8	810.3
March r	1 455	1 466	2 636	2 714	376.7	93.1	208.3	658.8
April r	1 542	1 549	2 576	2 693	376.3	88.9	216.8	661.3
May	1 741	1 752	2 949	3 057	442.4	92.9	266.1	880.1

(a) Includes dwelling units approved as part of the construction of non-residential building and alterations and additions to existing buildings (including conversions to dwelling units).

(b) From July 2000, value data for both residential and non-residential building approvals will be on a GST inclusive basis.

(c) Valued at \$10,000 or more. Includes conversions of existing buildings into residential buildings.

(d) Valued at \$50,000 or more.

Source: *Building Approvals, Australia* (Cat. no. 8731.0).

10 TURNOVER OF RETAIL ESTABLISHMENTS(a), NSW AND AUSTRALIA(b) — SEASONALLY ADJUSTED

		New South Wales			Australia		
	Latest period	Latest figure \$m	Change from prior period %	Change from same period prior year %	Latest figure \$m	Change from prior period %	Change from same period prior year %
Food retailing	May 2001	1 706.6	-1.2	9.8	5 336.3	-0.4	9.2
Department stores	May 2001	388.6	-0.1	1.8	1 110.3	-1.1	1.7
Clothing and soft good retailing	May 2001	335.4	1.1	6.7	879.9	-1.6	4.7
Household good retailing	May 2001	476.3	-1.7	2.8	1 515.3	-1.7	3.6
Recreational good retailing	May 2001	209.0	-4.7	-3.3	609.3	-1.8	0.1
Other retailing	May 2001	488.4	1.6	12.0	1 498.6	0.0	13.4
Hospitality and services	May 2001	1 003.5	2.0	14.7	2 376.6	0.7	14.5
Total value of retail sales	May 2001	4 607.7	-0.2	8.7	13 326.3	-0.5	8.4

(a) The figures shown are derived from a monthly survey of retail establishments. Excludes motor vehicle, boat and caravan dealers, service stations, smash repairers, tyre and battery retailers, bread and milk vendors, footwear repairers and electrical appliance repairers n.e.c. Retail establishments which do not have employees are excluded from the survey. Turnover includes retail sales, wholesale sales, takings from repairs, meals and hiring of goods; and commissions from agency activity (e.g. commissions received from collecting dry cleaning, selling lottery tickets etc.).

(b) Data from July 2000 reference month onwards are recorded inclusive of GST.

Source: Retail Trade, Australia (Cat. no. 8501.0).

11 TURNOVER OF RETAIL ESTABLISHMENTS(a), NSW(b) — SEASONALLY ADJUSTED(c)

	Food retailing \$m	Department stores \$m	Clothing and soft good retailing \$m	Household good retailing \$m	Recreational good retailing \$m	Other retailing \$m	Hospitality and services \$m	Total \$m
2000								
March	1 550.2	374.6	319.0	451.2	195.7	426.9	865.6	4 183.2
April	1 560.6	375.5	301.0	447.3	201.9	427.0	873.3	4 186.6
May	1 553.7	381.9	314.2	463.2	216.1	436.0	875.2	4 240.4
June	1 586.0	463.3	373.6	578.8	202.5	479.1	887.3	4 570.5
July	1 598.4	299.0	276.4	426.2	219.7	394.4	925.5	4 139.4
August	1 637.0	397.3	299.9	474.2	213.8	425.4	991.0	4 438.7
September	1 651.2	393.6	366.8	466.0	204.9	463.0	1 055.1	4 600.5
October	1 630.4	387.3	308.3	470.2	214.6	450.5	986.6	4 447.9
November	1 606.8	374.5	304.6	483.1	212.6	440.9	953.3	4 375.9
December	1 640.9	393.2	312.3	488.0	208.1	450.9	953.4	4 428.9
2001								
January	1 667.3	388.7	303.7	493.9	227.5	455.3	988.1	4 524.6
February	1 677.5	390.6	298.0	480.8	240.9	472.5	996.6	4 556.9
March	1 681.9	386.8	322.5	489.3	232.7	471.1	1 005.4	4 589.7
April	1 726.7	388.8	331.6	484.6	219.4	480.8	984.0	4 615.7
May	1 706.6	388.6	355.4	476.3	209.0	488.4	1 003.5	4 607.7

(a) The figures shown are derived from a monthly survey of retail establishments. Excludes motor vehicle, boat and caravan dealers, service stations, smash repairers, tyre and battery retailers, bread and milk vendors, footwear repairers and electrical appliance repairers n.e.c. Retail establishments which do not have employees are excluded from the survey. Turnover includes retail sales, wholesale sales, takings from repairs, meals and hiring of goods; and commissions from agency activity (e.g. commissions received from collecting dry cleaning, selling lottery tickets etc.).

(b) Data from July 2000 reference month onwards are recorded inclusive of GST.

(c) Data for previous months have been revised due to concurrent seasonal adjustment methodology. See Explanatory Notes in Retail Trade, Australia (Cat. no. 8501.0).

Source: Retail Trade, Australia (Cat. no. 8501.0).

12 NEW MOTOR VEHICLE REGISTRATIONS(a), NSW AND AUSTRALIA — SEASONALLY ADJUSTED(b)

	Latest period	New South Wales			Australia		
		Latest figure	Change from prior period	Change from same period prior year	Latest figure	Change from prior period	Change from same period prior year
		no.	%	%	no.	%	%
Passenger vehicles	Jun 2001	16 425	-8.7	22.0	49 286	-6.0	31.0
Other vehicles (excluding motor cycles)	Jun 2001	3 022	2.5	-17.2	9 668	2.0	-12.0
Total registrations (excluding motor cycles)	Jun 2001	19 447	-7.1	13.6	58 954	-4.8	21.3

(a) Includes vehicles (other than those of the defence forces) owned by Government departments and authorities. Excludes mobile plant and equipment, tractors, trailers and non-motorised caravans.

(b) The changes to the seasonally adjusted series result from the annual re-estimation of seasonal factors.

Source: New Motor Vehicle Registrations, Australia, Preliminary (Cat. no. 9301.0).

13 NEW MOTOR VEHICLE REGISTRATIONS(a), NSW — SEASONALLY ADJUSTED(b)

	Passenger vehicles	Other vehicles (excluding motor cycles)	Total (excluding motor cycles)
	no.	no.	no.
2000			
April	17 608	3 581	21 189
May	16 985	3 670	20 655
June	13 466	3 651	17 117
July	23 670	3 066	26 736
August	23 809	3 616	27 425
September	19 247	3 387	22 634
October	18 823	3 328	22 151
November	19 611	3 063	22 673
December	21 804	3 430	25 234
2001			
January	18 585	3 529	22 114
February	17 706	3 290	20 996
March	18 293	3 108	21 401
April	18 160	3 086	21 246
May	17 989	2 949	20 938
June	16 425	3 022	19 447

(a) Includes vehicles (other than those of the defence forces) owned by Government departments and authorities. Excludes mobile plant and equipment, tractors, trailers and non-motorised caravans.

(b) The changes to the seasonally adjusted series result from the annual re-estimation of seasonal factors.

Source: New Motor Vehicle Registrations, Australia, Preliminary (Cat. no. 9301.0).

14 ACCOMMODATION ESTABLISHMENTS(a) NSW AND AUSTRALIA — ORIGINAL

	Unit	Latest period	Latest figure	New South Wales		Latest figure	Australia	
				Change from prior period	Change from same period prior year		Change from prior period	Change from same period prior year
				%	%		%	%
Room nights	'000	Mar qtr 2001	3 421.1	-2.2	1.0	10 188.5	-3.4	1.0
Room occupancy rate	%	Mar qtr 2001	57.9	-1.4	-4.0	57.7	-1.9	-0.9
Takings(b)	\$'000	Mar qtr 2001	433 156	-6.0	8.9	1 191 842	-3.9	9.5

(a) Licensed hotels with facilities, motels and guest houses and serviced apartments with 15 or more rooms or units.

(b) Includes GST.

Source: Tourist Accommodation, Australia (Cat. no. 8635.0).

15 ACCOMMODATION ESTABLISHMENTS(a) SYDNEY AND NSW — ORIGINAL

	Sydney Tourism Region(b)			New South Wales		
	Room nights	Room occupancy rate	Takings(c)	Room nights	Room occupancy rate	Takings
	'000	%	\$'000	'000	%	\$'000
1999						
December qtr	1 962.5	72.3	276 165	3 423.1	60.9	395 165
2000						
March qtr	1 980.0	71.7	279 374	3 388.1	60.3	397 869
June qtr	1 902.6	67.1	258 225	3 324.0	58.1	374 005
September qtr	2 093.6	69.6	412 378	3 543.3	59.7	555 244
December qtr	2 096.0	68.8	334 433	3 498.0	58.7	460 756
2001						
March qtr	2 037.9	67.1	304 602	3 421.1	57.9	433 156

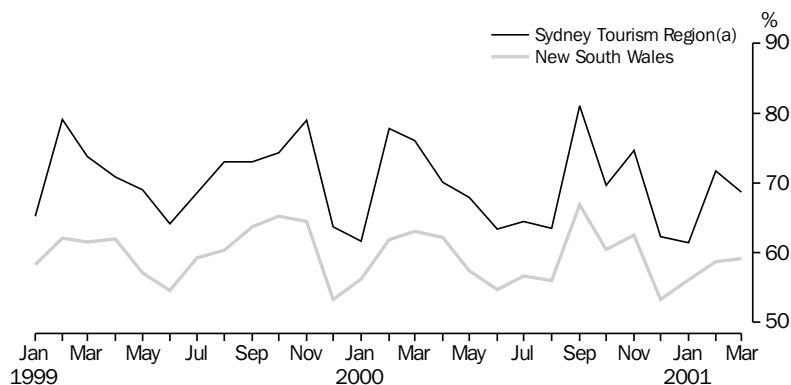
(a) Licensed hotels with facilities, motels and guest houses and serviced apartments with 15 or more rooms or units.

(b) Excludes Gosford, Wyong and Blue Mountains Statistical Local Areas.

(c) Takings after 1 July 2000 are on a GST inclusive basis.

Source: Tourist Accommodation, Small Area Data, New South Wales (Cat. no. 8635.1.40.001).

16 ACCOMMODATION ESTABLISHMENTS, MONTHLY ROOM OCCUPANCY RATE — ORIGINAL



(a) Excludes Gosford, Wyong and Blue Mountains Statistical Local Areas.

Source: Tourist Accommodation, Small Area Data, NSW (Prod. no. 8635.1.40.001).

17 CONSUMER AND PRODUCER PRICE INDEXES — NSW AND AUSTRALIA

	Unit	Latest period	Latest figure	New South Wales(a)		Latest figure	Australia(b)	
				Change from prior period	Change from same period prior year		Change from prior period	Change from same period prior year
				%	%		%	%
Consumer Price Index (all groups)	1989-90 = 100.0	Jun qtr 2001	135.0	0.7	6.3	133.8	0.8	6.0
Price index of materials used in house building (all groups)	1989-90 = 100.0	Jun qtr 2001	130.2	0.3	-0.8	124.4	0.2	-0.9
Price index of materials used in building other than house building (all groups)	1989-90 = 100.0	Jun qtr 2001	116.7	0.3	-0.5	117.2	0.4	-0.2

(a) Refers to State capital city — Sydney.

(b) For the Consumer Price Index this is the weighted average of eight capital cities and for the other two indexes, the weighted average of the six State capital cities.

Source: Consumer Price Index, Australia (Cat. no. 6401.0); Producer Price Indexes, Australia (Cat. no. 6427.0).

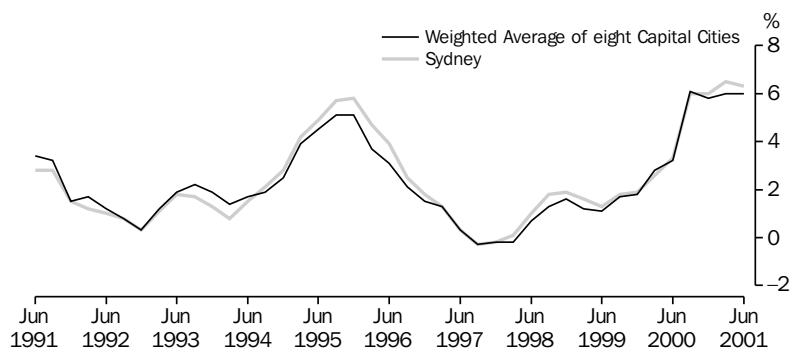
18 CONSUMER AND PRODUCER PRICE INDEXES — NSW(a)

	Consumer Price Index, all groups	Price Index of materials used in house building, all groups	Price Index of materials used in building other than house building, all groups
	1989-90 = 100.0	1989-90 = 100.0	1989-90 = 100.0
2000			
March qtr	125.8	128.0	116.4
June qtr	127.0	131.2	117.3
September qtr	131.6	130.0	115.4
December qtr	132.2	129.8	115.7
2001			
March qtr	134.0	129.8	116.4
June qtr	135.0	130.2	116.7

(a) Refers to State capital city — Sydney.

Source: Consumer Price Index, Australia (Cat. no. 6401.0); Producer Price Indexes, Australia (Cat. no. 6427.0).

19 CONSUMER PRICE INDEX, ANNUAL RATE OF CHANGE



Source: Consumer Price Index, Australia (Cat. no. 6401.0).

20 SECURED HOUSING FINANCE COMMITMENTS TO INDIVIDUALS FOR OWNER OCCUPATION — NSW AND AUSTRALIA

	Latest period	New South Wales			Australia		
		Latest figure	Change from prior period	Change from same period prior year	Latest figure	Change from prior period	Change from same period prior year
		\$m	%	%	\$m	%	%
Lending commitments for the construction or purchase of dwellings—							
Construction of dwellings	May 2001	246	36.7	—	900	41.3	13.2
Purchase of newly erected dwellings	May 2001	134	32.7	42.6	300	27.7	28.8
Purchase of established dwellings(a)	May 2001	2 405	23.3	26.0	5 373	24.4	23.7
Refinancing of existing dwellings	May 2001	782	34.8	49.2	1 745	30.6	37.1
Lending commitments for alterations and additions	May 2001	123	19.4	3.4	337	26.2	8.4
Total lending commitments to individuals for housing(b)	May 2001	3 567	26.9	28.7	8 318	27.4	25.2
Total lending commitments to individuals for housing (seasonally adjusted)(b)	May 2001	3 147	8.4	31.0	7 454	7.1	26.7

(a) Excludes refinancing.

(b) Excludes alterations and additions.

Source: Housing Finance for Owner Occupation, Australia (Cat. no. 5609.0).

21 SECURED HOUSING FINANCE COMMITMENTS TO INDIVIDUALS FOR OWNER OCCUPATION — NSW

	Lending commitments for the construction or purchase of dwellings					Total lending commitments to individuals for housing(b)	
	Construction of dwellings	Purchase of newly erected dwellings	Purchase of established dwellings(a)	Refinancing of existing dwellings	Lending commitments for alterations and additions	Original	Seasonally adjusted
	\$m	\$m	\$m	\$m	\$m	\$m	\$m
1997–1998	2 625	1 280	14 445	3 573	1 174	21 923	..
1998–1999	2 990	1 147	16 761	4 026	1 126	24 925	..
1999–2000	3 268	1 129	21 637	4 993	1 271	31 027	..
2000							
March	296	101	1 956	488	123	2 842	2 492
April	213	77	1 581	358	94	2 229	2 407
May	246	94	1 909	524	119	2 772	2 402
June	197	86	1 629	474	105	2 386	2 232
July	170	71	1 436	451	89	2 129	2 166
August	166	88	1 710	480	91	2 444	2 336
September	152	83	1 467	418	84	2 120	2 165
October	151	65	1 397	492	90	2 105	2 123
November	160	82	1 757	542	85	2 542	2 357
December	143	88	1 688	483	80	2 402	2 690
2001							
January	121	97	1 497	426	79	2 141	2 644
February	151	88	1 630	455	96	2 323	2 464
March	189	120	2 098	622	111	3 029	2 801
April	180	101	1 950	580	103	2 811	2 902
May	246	134	2 405	782	123	3 567	3 147

(a) Excludes refinancing.

(b) Excludes alterations and additions.

Source: Housing Finance for Owner Occupation, Australia (Cat. no. 5609.0).

22 NSW GOVERNMENT FINANCE, GENERAL GOVERNMENT SECTOR(a)

	Budget 12 months to 30/06/2001	Actual 11 months to 31/05/2001
	\$m	\$m
State revenues		
Taxation	12 412	11 804
Commonwealth grants	12 780	11 777
Capital repatriations	2 400	3 203
Financial distributions	1 210	1 123
Fines, regulatory fees and other	792	838
<i>Total state revenues</i>	<i>29 594</i>	<i>28 745</i>
Operating revenues		
Sale of goods and services	2 171	2 092
Investment income	391	426
Grants and contributions	421	478
Other revenue	298	266
<i>Total operating revenues</i>	<i>3 281</i>	<i>3 262</i>
Expenses		
Employee Related — super valuations	0	1 182
Employee Related — super other	1 540	1 507
Employee related — other	12 157	11 238
Other operating	6 765	6 344
Maintenance	1 120	992
Depreciation and amortisation	995	1 316
Recurrent grants and subsidies	4 060	4 535
Capital grants and subsidies	1 252	1 002
Finance valuations	278	711
Finance other	1 009	903
<i>Total expenses</i>	<i>29 176</i>	<i>29 730</i>
Gain/(loss) on sale of non-current assets	-14	1
Net cost of services	25 909	26 467
Operating Surplus	3 685	2 278
less valuation gains	-1 888	-848
less capital acquisitions	-2 540	-1 980
plus depreciation	995	1 316
plus asset sales & other	407	115
Budget Surplus	659	881

(a) The format for reporting NSW Government Finance Statistics has been amended to ensure consistency with the reporting framework used in the 2001–02 Budget Papers. Changes include the end of separate reporting of abnormal items and the consequent need to create a new revenue category (Capital Repatriations) and two new expense categories (Superannuation Valuations and Finance Valuations). Additionally there have been some minor reclassification between expenses and capital expenditure. However, the budgeted Surplus is unchanged from that reported in the 2000–01 Budget Papers.

Source: Financial Statement released by NSW Treasury. Figures may differ from data published in annual ABS publications.

23 ACTUAL PRIVATE NEW FIXED CAPITAL EXPENDITURE, CURRENT PRICES, NSW AND AUSTRALIA — TREND

Type of asset	Latest period	New South Wales			Australia		
		Latest figure	Change from prior period	Change from same period prior year	Latest figure	Change from prior period	Change from same period prior year
		\$m	%	%	\$m	%	%
New buildings and structures	Mar qtr 2001	629	-15.3	-34.9	2 102	-14	-25.8
Equipment, plant and machinery	Mar qtr 2001	2 700	-4.3	-4.8	7 612	1.2	-0.2
Total	Mar qtr 2001	3 329	-6.6	-12.4	9 714	-2.5	-7.1

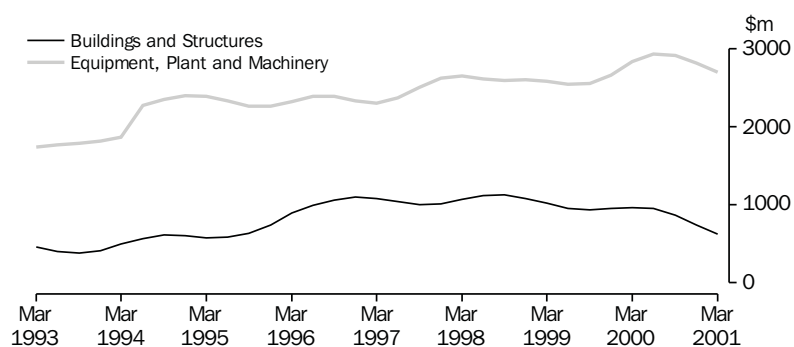
Source: State Estimates of Private New Capital Expenditure (Cat. no. 5646.0).

24 ACTUAL PRIVATE NEW FIXED CAPITAL EXPENDITURE, CURRENT PRICES, NSW — TREND

	Type of asset		Total
	New buildings and structures	Equipment, plant and machinery	
	\$m	\$m	\$m
1999			
December qtr	952	2 661	3 613
2000			
March qtr	966	2 835	3 801
June qtr	952	2 938	3 890
September qtr	872	2 918	3 790
December qtr	743	2 820	3 563
2001			
March qtr	629	2 700	3 329

Source: State Estimates of Private New Capital Expenditure (Cat. no. 5646.0).

25 ACTUAL PRIVATE NEW FIXED CAPITAL EXPENDITURE, CURRENT PRICES, NSW — TREND



Source: State Estimates of Private New Capital Expenditure (Cat. no. 5646.0).

26 INTERNATIONAL TRADE, IMPORTS(a) AND EXPORTS(b) — NSW AND AUSTRALIA(c)

	Latest period	New South Wales			Australia		
		Latest figure	Change from prior period	Change from same period prior year	Latest figure	Change from prior period	Change from same period prior year
		\$m	%	%	\$m	%	%
Overseas imports into NSW	May 2001	4 223	2.7	-7.8	10 001	4.5	-3.6
Total overseas exports(d)	May 2001	1 980	-0.7	11.8	9 950	2.6	14.4
Export commodities and SITC(e) code							
Meat and meat preparations (01)	May 2001	137	5.8	46.9	533	0.8	22.2
Cereals and cereal preparations (04)	May 2001	151	20.7	28.3	576	30.2	33.4
Wool and other animal hair (268)	May 2001	81	-3.2	17.1	300	0.9	15.0
Coal, coke and briquettes (32)	May 2001	350	-13.4	18.6	1 054	5.0	40.8
Iron and steel (67)	May 2001	12	-14.4	-88.7	63	-7.0	-57.6
Aluminium (684)	May 2001	136	0.7	11.7	383	-8.3	8.2
Office machines and automatic data processing machines (75)	May 2001	33	5.5	9.4	50	-3.9	1.9

(a) Figures shown are Customs value.

(b) Restrictions are placed on the release of statistics for certain commodities for reasons of confidentiality. The restrictions do not affect total export and import figures, but they can affect figures at State and commodity levels. More information on the treatment of confidential data in international merchandise trade statistics can be obtained from the *Information Paper, International Merchandise Trade Statistics, Australia: Data Confidentiality* (Cat. no. 5487.0), or the International Trade Confidentiality Manager on 02 6252 5409. Figures shown are Free On Board (FOB) values.

(c) All percentages are calculated using unrounded figures.

(d) Excludes re-exported goods.

(e) Standard International Trade Classification Revision 3.

Source: ABS data available on request, International Trade database.

27 INTERNATIONAL TRADE, IMPORTS(a) AND EXPORTS(b) — NSW

	Overseas exports of SITC(c) commodities								
	Overseas imports into NSW	Total overseas exports(d)	Meat and meat preparations (01)	Cereals and cereal preparations (04)	Wool and other animal hair (268)	Coal, coke and briquettes (32)	Iron and steel (67)	Aluminium (684)	Office machines and automatic data processing machines (75)
	\$m	\$m	\$m	\$m	\$m	\$m	\$m	\$m	\$m
1998-1999	42 142	17 948	948	1 234	685	3 766	958	1 151	333
1999-2000	47 927	18 966	1 047	1 270	826	3 092	831	1 341	379
2000									
March	4 341	1 637	95	123	78	238	79	132	43
April	3 534	1 612	87	94	59	285	98	109	35
May	4 580	1 771	93	118	69	295	109	122	30
June	4 866	1 768	93	112	66	268	94	129	29
July	4 493	1 779	101	138	66	318	64	129	31
August	4 947	1 826	99	143	66	301	67	135	27
September	4 472	1 843	89	149	78	292	10	134	30
October	5 071	2 042	120	160	114	337	10	148	37
November	4 936	1 973	118	139	112	283	11	149	26
December	4 243	2 017	105	118	103	309	12	129	36
2001									
January	3 881	r 1 565	94	87	63	313	9	125	19
February	3 493	r 1 706	117	116	84	262	10	125	27
March r	4 322	2 055	132	118	123	327	12	160	35
April	r 4 113	r 1 994	r 130	125	r 83	404	14	136	31
May	4 223	1 980	137	151	81	350	12	136	33

(a) Figures shown are Customs value.

(b) Restrictions are placed on the release of statistics for certain commodities for reasons of confidentiality. The restrictions do not affect total export and import figures, but they can affect figures at State and commodity levels. More information on the treatment of confidential data in international merchandise trade statistics can be obtained from the *Information Paper, International Merchandise Trade Statistics, Australia: Data Confidentiality* (Cat. no. 5487.0), or the International Trade Confidentiality Manager on 02 6252 5409. Figures shown are Free On Board (FOB) values.

(c) Standard International Trade Classification Revision 3.

(d) Excludes re-exported goods.

Source: ABS data available on request, International Trade database.

FOR MORE INFORMATION...

- INTERNET** www.abs.gov.au the ABS web site is the best place to start for access to summary data from our latest publications, information about the ABS, advice about upcoming releases, our catalogue, and Australia Now—a statistical profile.
- LIBRARY** A range of ABS publications is available from public and tertiary libraries Australia-wide. Contact your nearest library to determine whether it has the ABS statistics you require, or visit our web site for a list of libraries.
- CPI INFOLINE** For current and historical Consumer Price Index data, call 1902 981 074 (call cost 77c per minute).
- DIAL-A-STATISTIC** For the latest figures for National Accounts, Balance of Payments, Labour Force, Average Weekly Earnings, Estimated Resident Population and the Consumer Price Index call 1900 986 400 (call cost 77c per minute).

INFORMATION SERVICE

Data which have been published and can be provided within five minutes are free of charge. Our information consultants can also help you to access the full range of ABS information—ABS user-pays services can be tailored to your needs, time frame and budget. Publications may be purchased. Specialists are on hand to help you with analytical or methodological advice.

- PHONE** **1300 135 070**
- EMAIL** **client.services@abs.gov.au**
- FAX** 1300 135 211
- POST** Client Services, ABS, GPO Box 796, Sydney 1041

WHY NOT SUBSCRIBE?

ABS subscription services provide regular, convenient and prompt deliveries of ABS publications and products as they are released. Email delivery of monthly and quarterly publications is available.

- PHONE** 1300 366 323
- EMAIL** subscriptions@abs.gov.au
- FAX** 03 9615 7848
- POST** Subscription Services, ABS, GPO Box 2796Y, Melbourne 3001



2130710008015
ISSN 1031-8534

RRP \$18.00